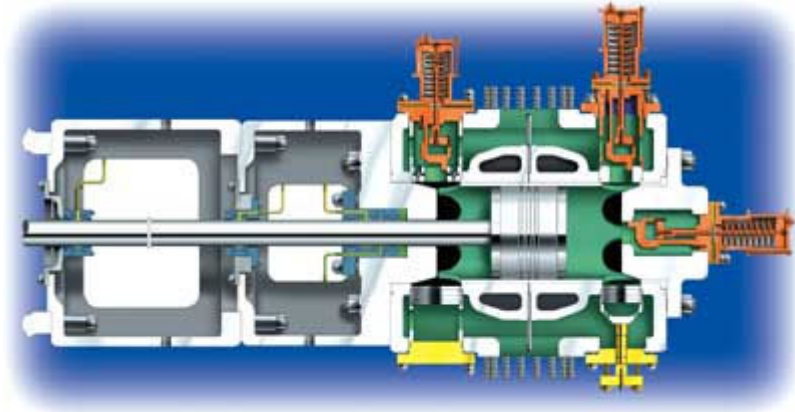




# PERCH RECICOMP INTERNATIONAL

## PRI-2000 Reciprocating Compressor



Intermittent flow compressor

## Specifications

**Flowrate:** 15,000 m<sup>3</sup> gas/ minute

**Drivers:** Steam turbines / Gas turbines / Electric motor, Compatible with most SCADA software

**Average lifespan:** 4 years.

**Range per compressor:** 80 KM

Capable of being connected to either 1200 or 1400 mm diameter pipelines

Costs estimated (per compressor): € 9.250.000 (without personnel costs)

**Building time:** an estimation of the time can be delivered on demand

Please contact us at [Sales@perchrecicomp.com](mailto:Sales@perchrecicomp.com) for more information on our reciprocating compressors.

Wilshire Boulevard  
90212-2020 Los Angeles CA  
United States  
[www.perchrecicomp.com](http://www.perchrecicomp.com)